

Diverse voices in quality: partnership and the student learning experience in the tertiary quality framework

SCAPP Conference, Tuesday 16th May 2023

Simon Varwell PFHEA

Senior Development Consultant



@sparqs_Simon @sparqs_Scotland
#SCAPPConference

Who are we?



- student **partnerships** in **quality Scotland**.
- Full-time staff in Edinburgh and Inverness.
- Works with all institutions and students' associations in the university and college sector.
- Scottish Charity - all sector agencies are our members.
- Main funding from the Scottish Funding Council.
- www.sparqs.ac.uk



Scottish Funding Council
Comhairle Maoineachaidh na h-Alba



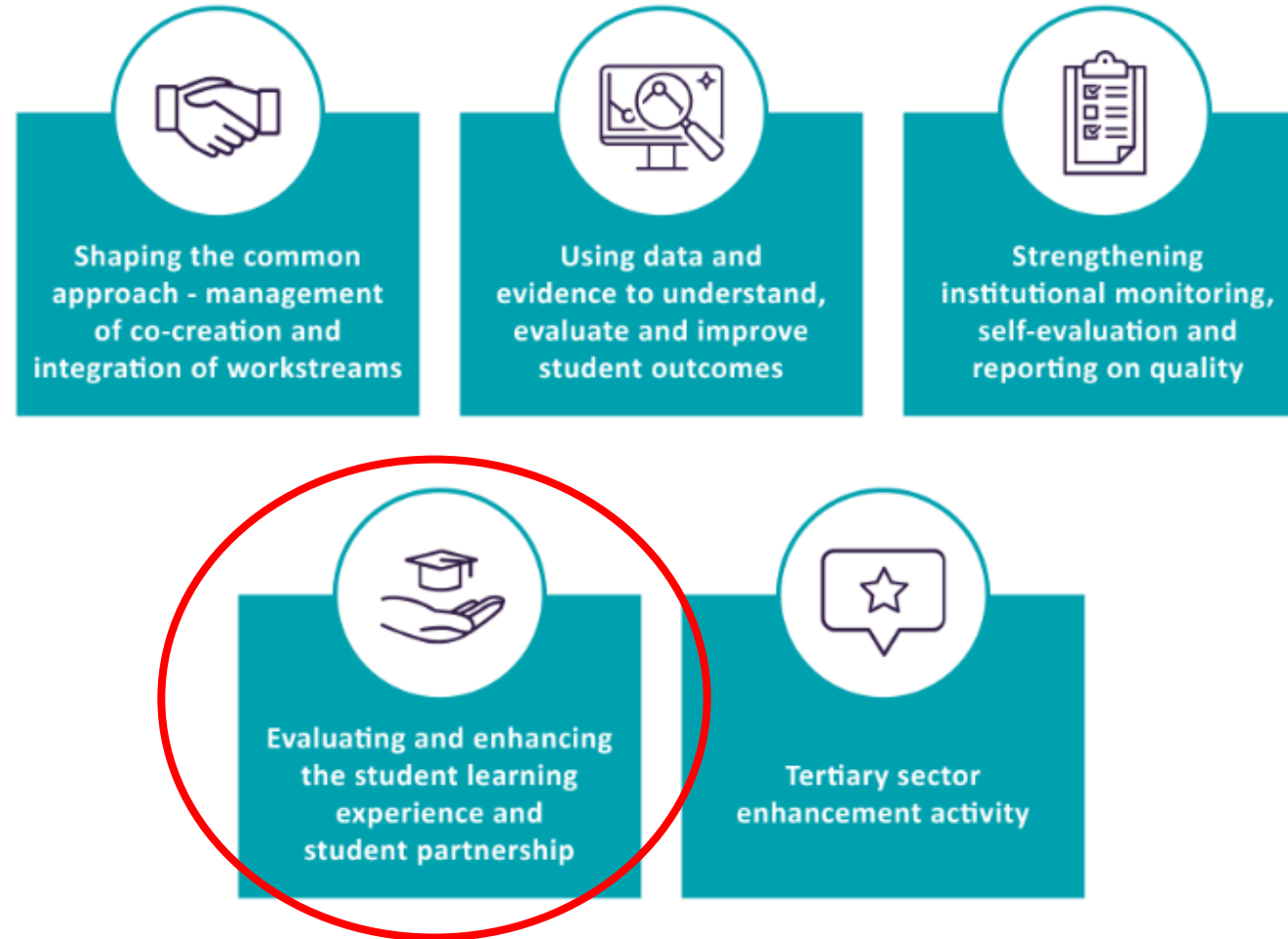
@sparqs_Simon @sparqs_Scotland #SCAPPConference

We're also celebrating!

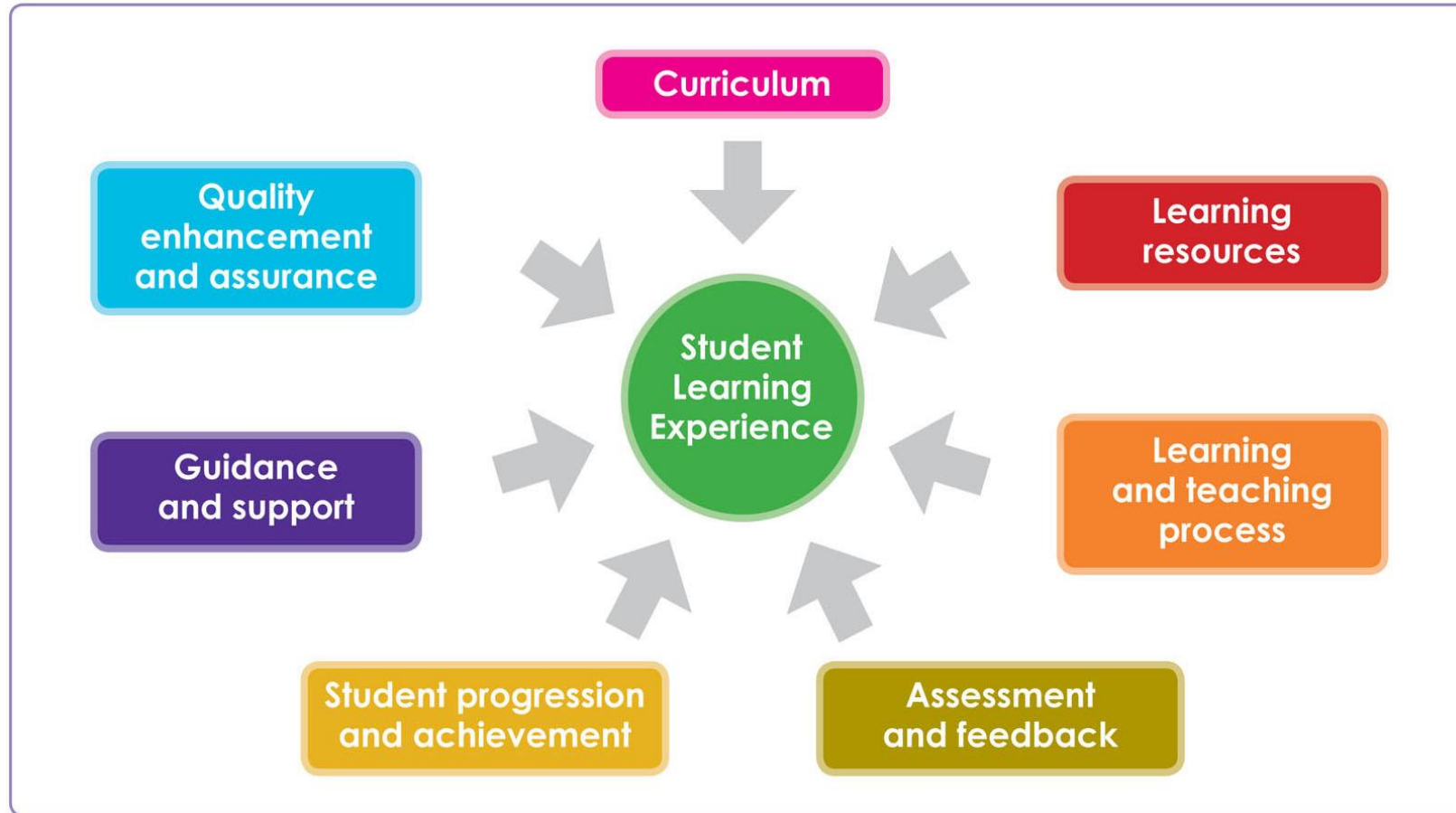
- This year, sparqs is 20 years old!
- Our Student Engagement Awards return, seeking your nominations.
- Seven categories.
- Submissions close 30th June.
- Winners announced at our 20th birthday party on 5th October.



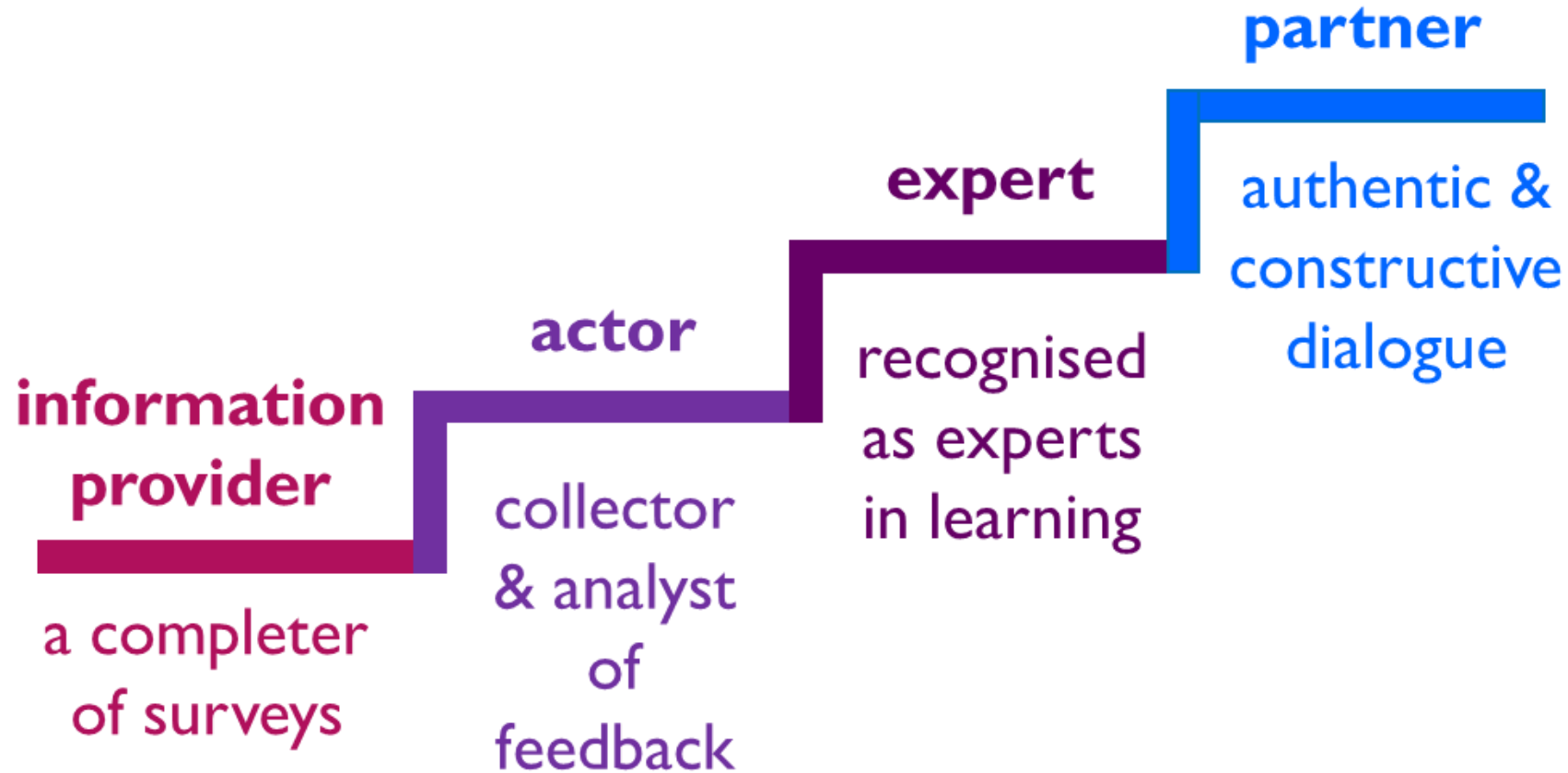
Developing tertiary quality



The Student Learning Experience

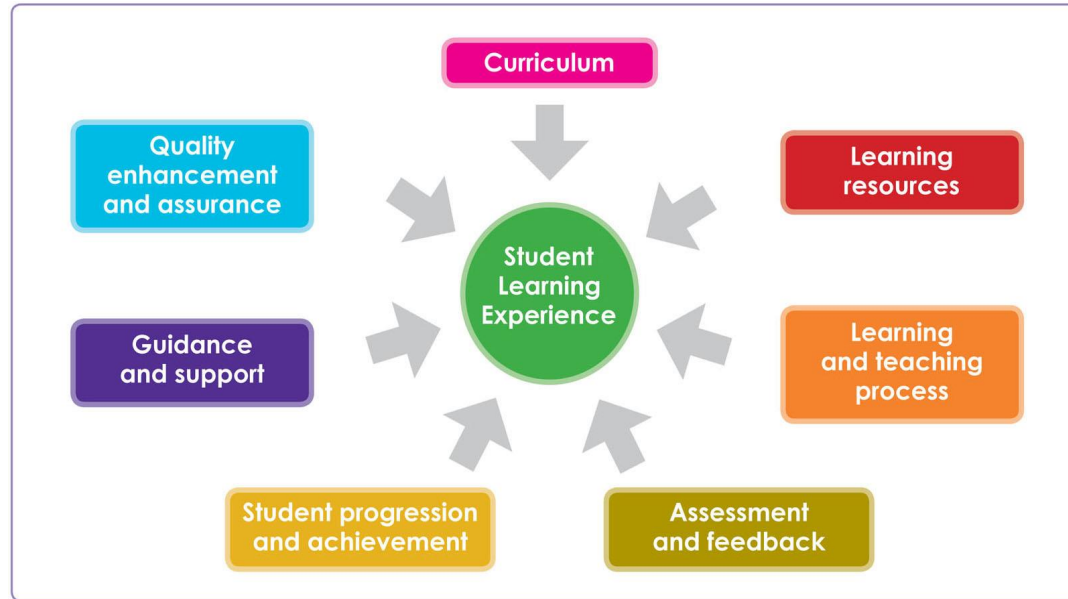


Partnership in quality



@sparqs_Simon @sparqs_Scotland #SCAPPConference

At the heart of quality...



information provider

a completer of surveys

actor

collector & analyst of feedback

expert

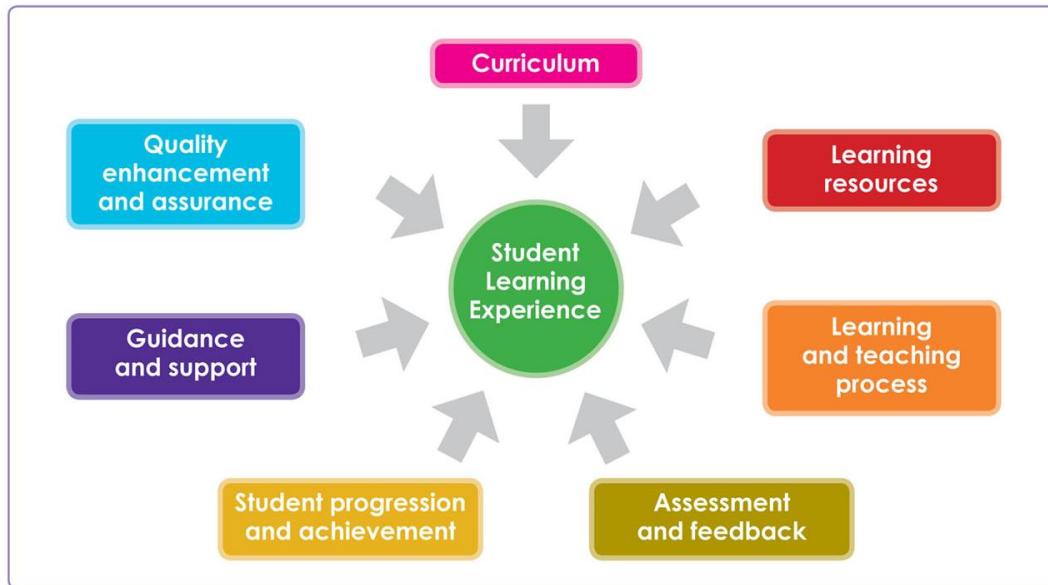
recognised as experts in learning

partner

authentic & constructive dialogue



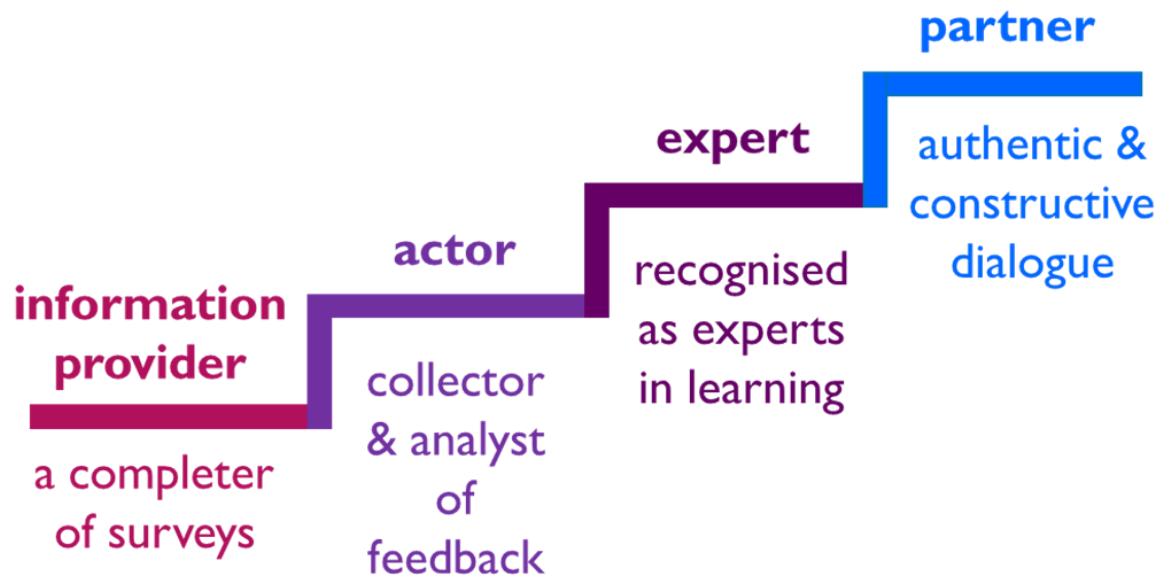
The updated SLE model will:



- Be a shared **sector reference point** for evaluating the learning experience.
- Be a basis for staff-student **conversations** about enhancement.
- Provide **evidence and data** at course, institution and national level for planning and enhancement.



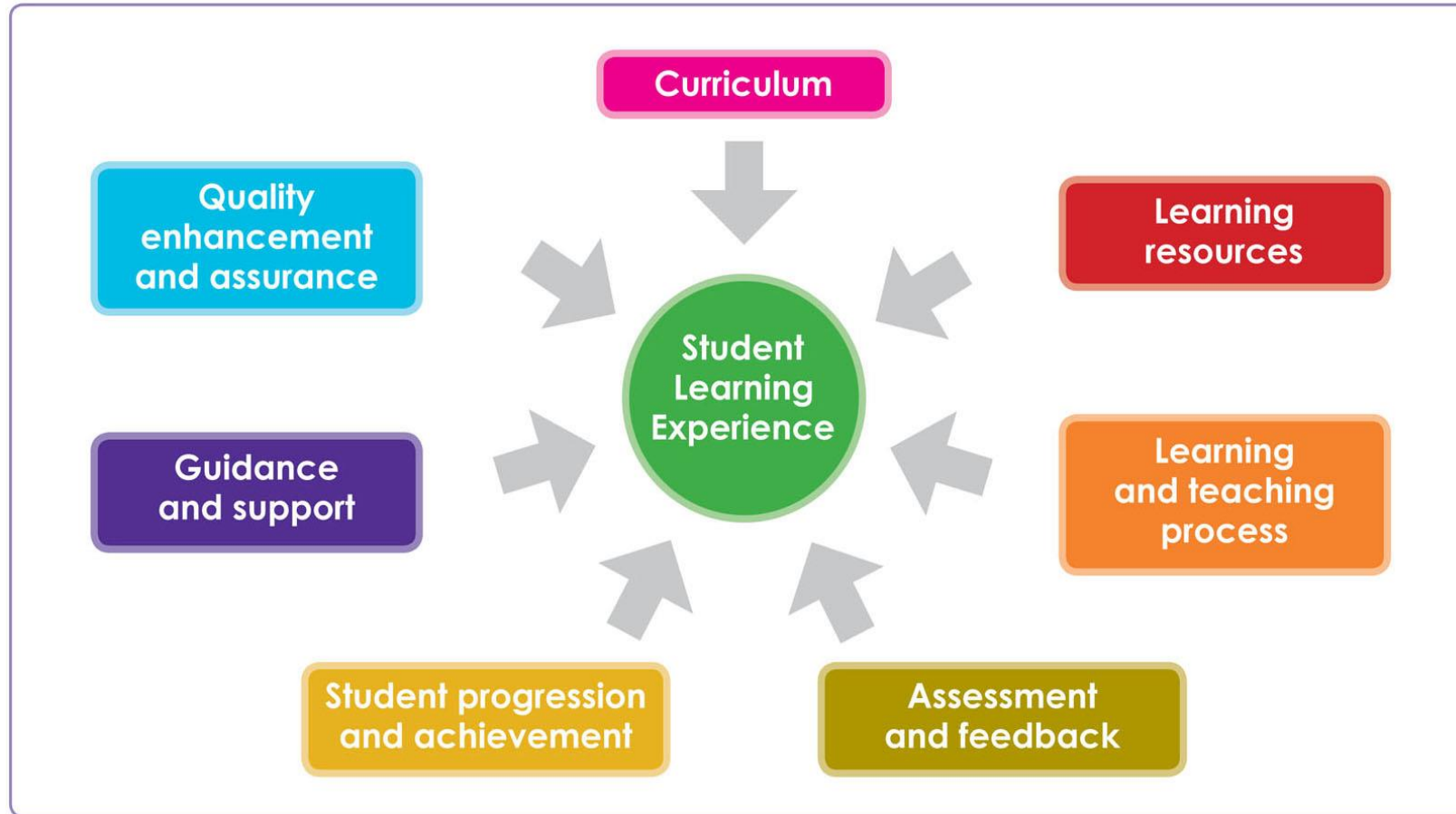
The updated partnership model will:



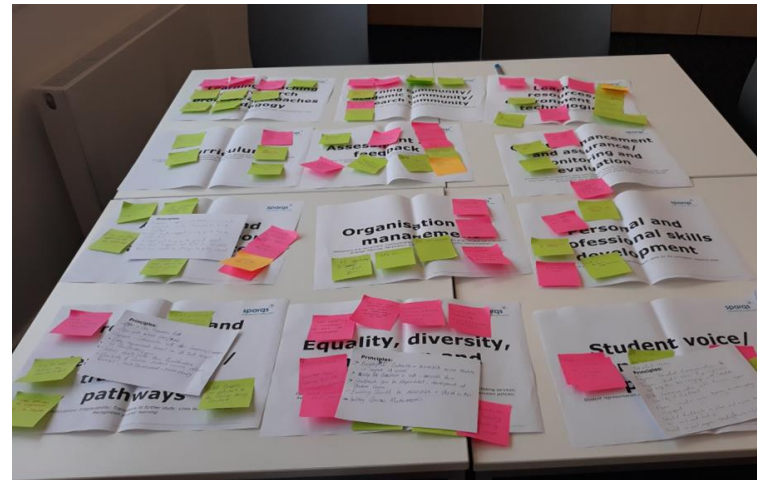
- Aid reflection on the role students play in quality arrangements.
- Identify the tools and methods required to engage different groups of students as partners.
- Build evidence of real partnership working between staff and students.
- Generate reflection on the expertise and perspectives different students can bring to quality activities.



The Student Learning Experience

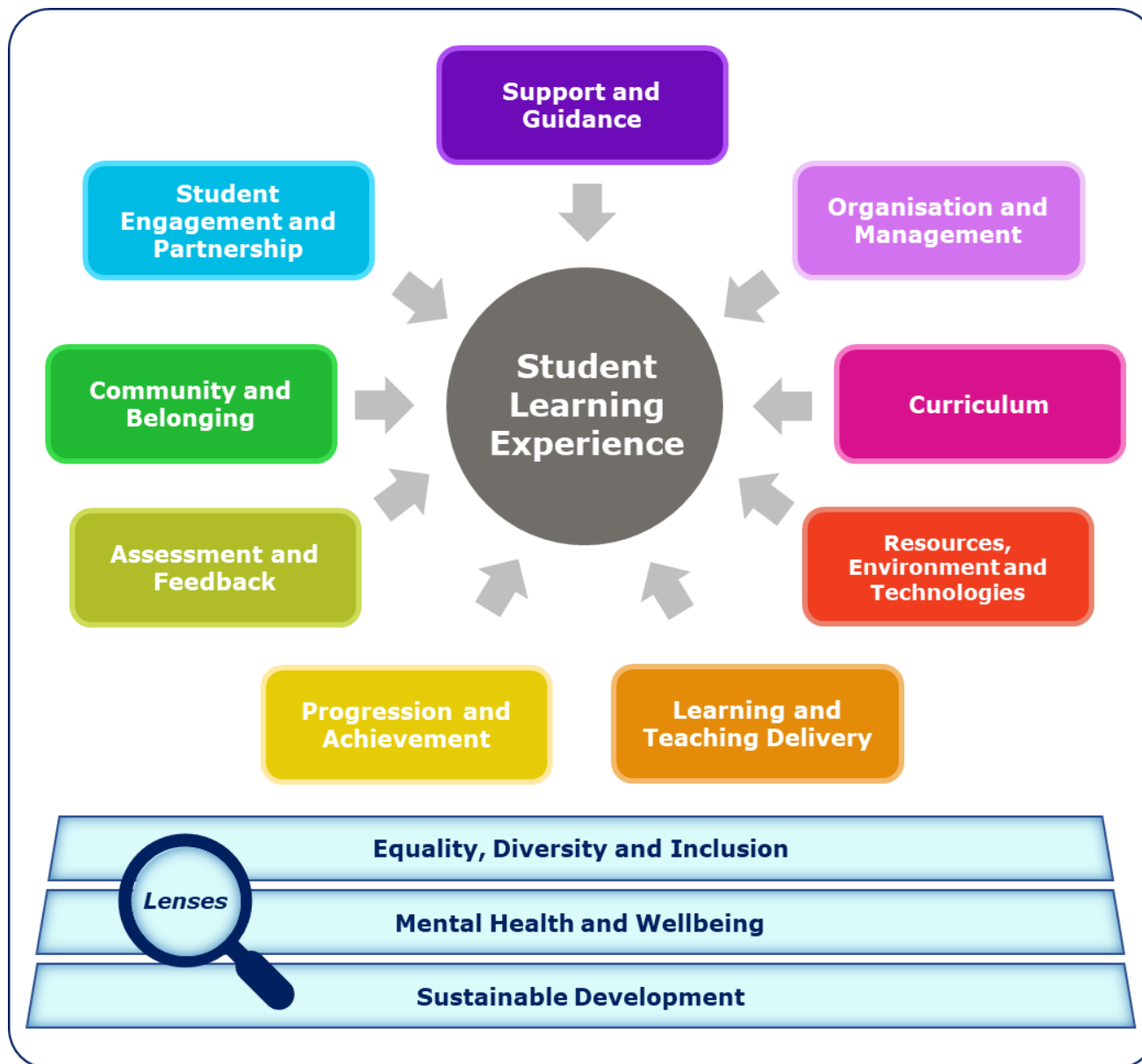


What's happened so far?



- **Desk research**, exploring categorisations of the SLE.
- **Workshops** with 300+ students.
- Development of **draft model** and **principles**.
- **Consultation** with the sector – including with WP practitioners today!
- National **steering group** established.





Draft SLE model

Our challenge to you today



In small groups, take one building block (heading) from the SLE model. Discuss, for ten to fifteen minutes:

1. What **knowledge and experience** WP students bring to conversations in these areas with teaching and support staff and your students' association, and how you support that.
2. What **role from the partnership model** WP students currently play in that building block... and how they could be further developed as partners.
3. Your **feedback** on the models' value for enhancing the WP student learning experience.

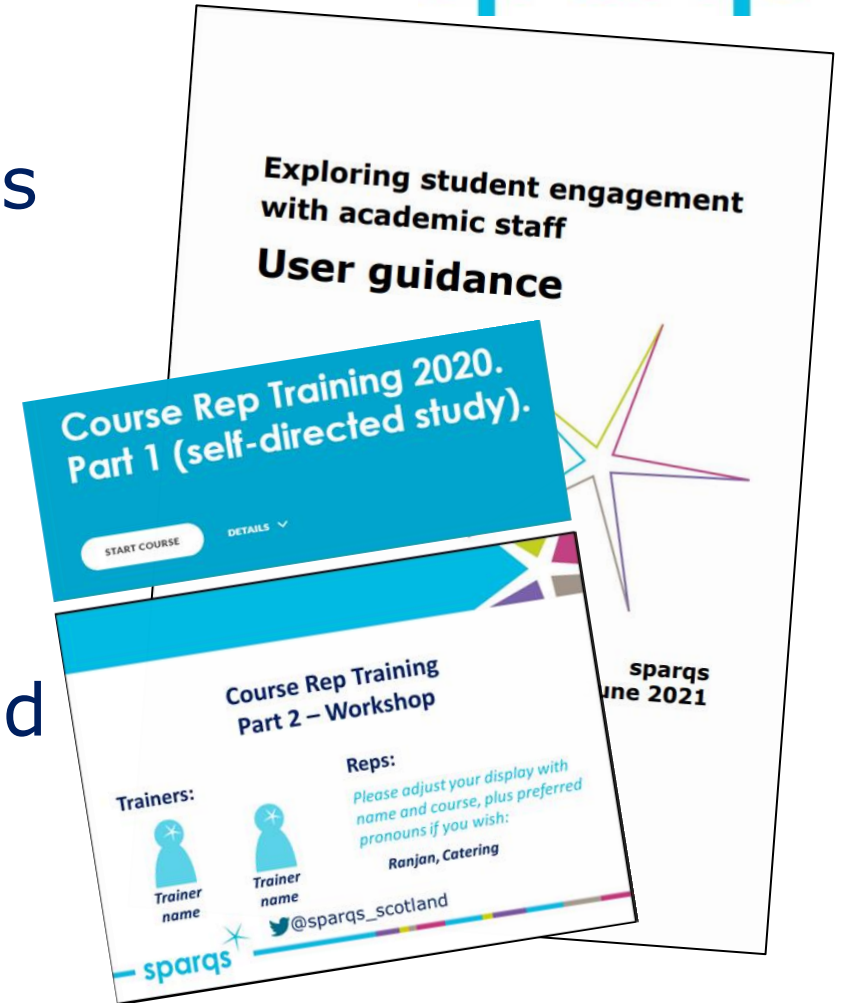


@sparqs_Simon @sparqs_Scotland #SCAPPConference

What's happening next?



- Steering group, with staff and students from across the sector, has begun its activity.
- Development of final drafts of models.
- Implementation in 2024.
- Conversations for institutions, SAs, and sparqs' own provision to staff and students in quality and support roles.



@sparqs_Simon @sparqs_Scotland #SCAPPConference

More information

- [SLE project page on sparqs website.](#)
- [Tertiary Quality Project on SFC website.](#)
- Speak to your quality enhancement and students' association colleagues.
- Keep in touch with sparqs:
 - Simon Varwell – simon.varwell@sparqs.ac.uk
 - Megan Brown – megan.brown@sparqs.ac.uk
- Don't forget our [Student Engagement Awards!](#)

